

This is the Revision D version of the LCD32Holder module. The status of this project is work in progress.

# LCD32Holder Module (Revision D)

## Table of Contents

This document is also available in PDF format.

- 1. Introduction
- 2. Hardware
  - ◆ 2.1 Circuit Schematic
  - ◆ 2.2 Printed Circuit Board
- 3. Issues

## 1. Introduction

The LCD32HOLDERHolder module adapts the Lumex LCM-S01602DTR/M to the LCD32HOLDER module.

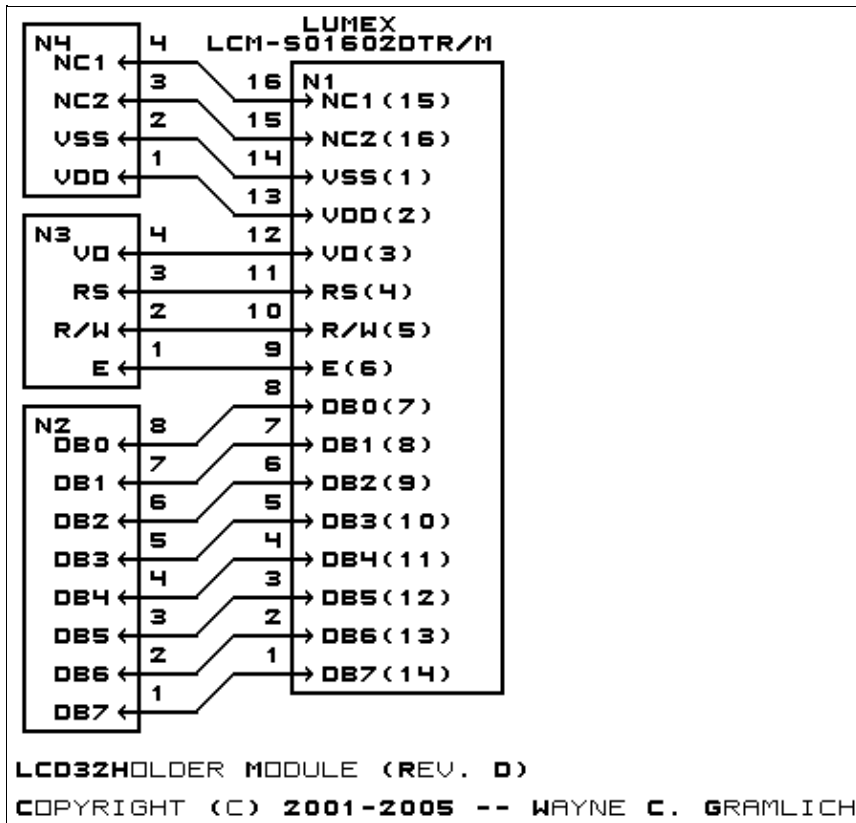
## 2. Hardware

The hardware consists of a circuit schematic and a printed circuit board.

### 2.1 Circuit Schematic

The schematic for the LCD32HOLDERHolder module is shown below:

## LCD32Holder Module (Revision D)



The parts list kept in a separate file -- [lcd32holder.ptl](#).

## 2.2 Printed Circuit Board

The printed circuit board files are listed below:

[lcd32holder\\_back.png](#)

The solder side layer.

[lcd32holder\\_front.png](#)

The component side layer.

[lcd32holder\\_artwork.png](#)

The artwork layer.

[lcd32holder.gbl](#)

The RS-272X "Gerber" back (solder side) layer.

[lcd32holder.gtl](#)

The RS-272X "Gerber" top (component side) layer.

[lcd32holder.gal](#)

The RS-272X "Gerber" artwork layer.

[lcd32holder.drl](#)

The "Excellon" NC drill file.

[lcd32holder.tol](#)

The "Excellon" tool rack file.

### 3. Issues

Any fabrication issues are listed here.

---

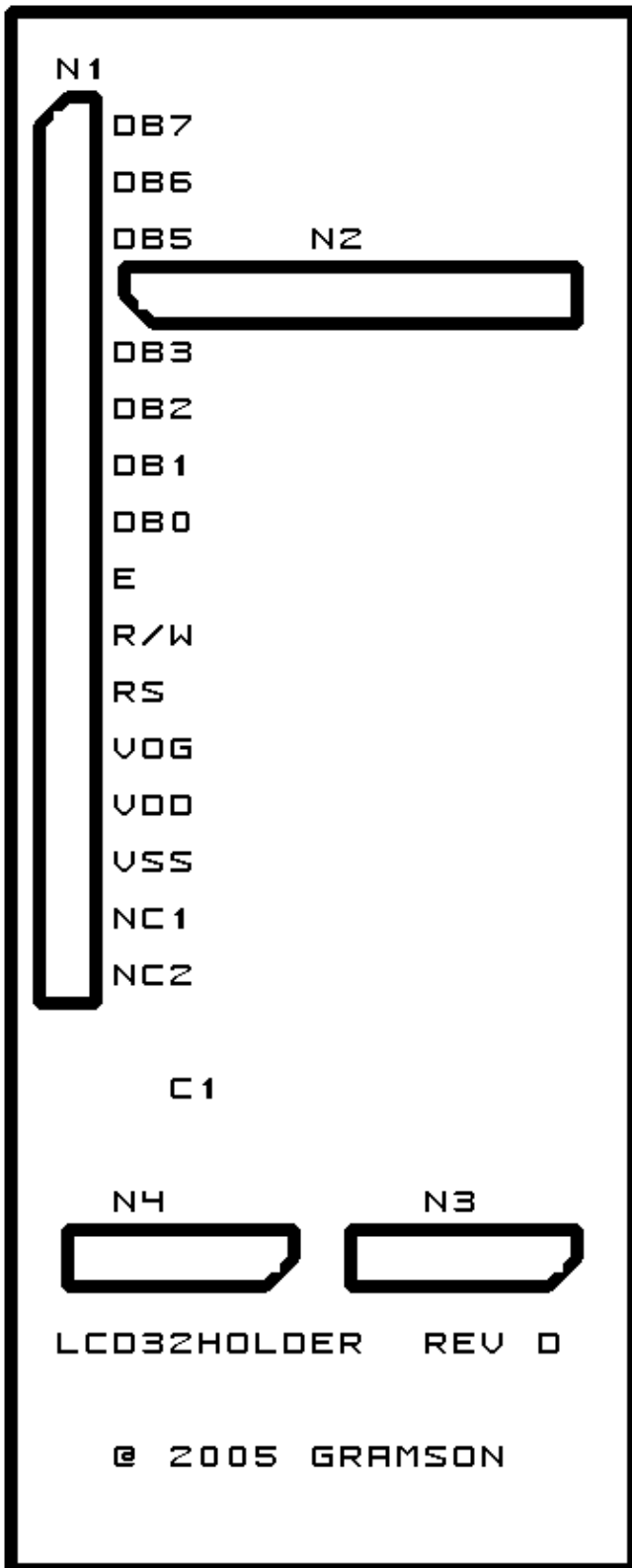
Copyright (c) 2001–2005 by Wayne C. Gramlich. All rights reserved.



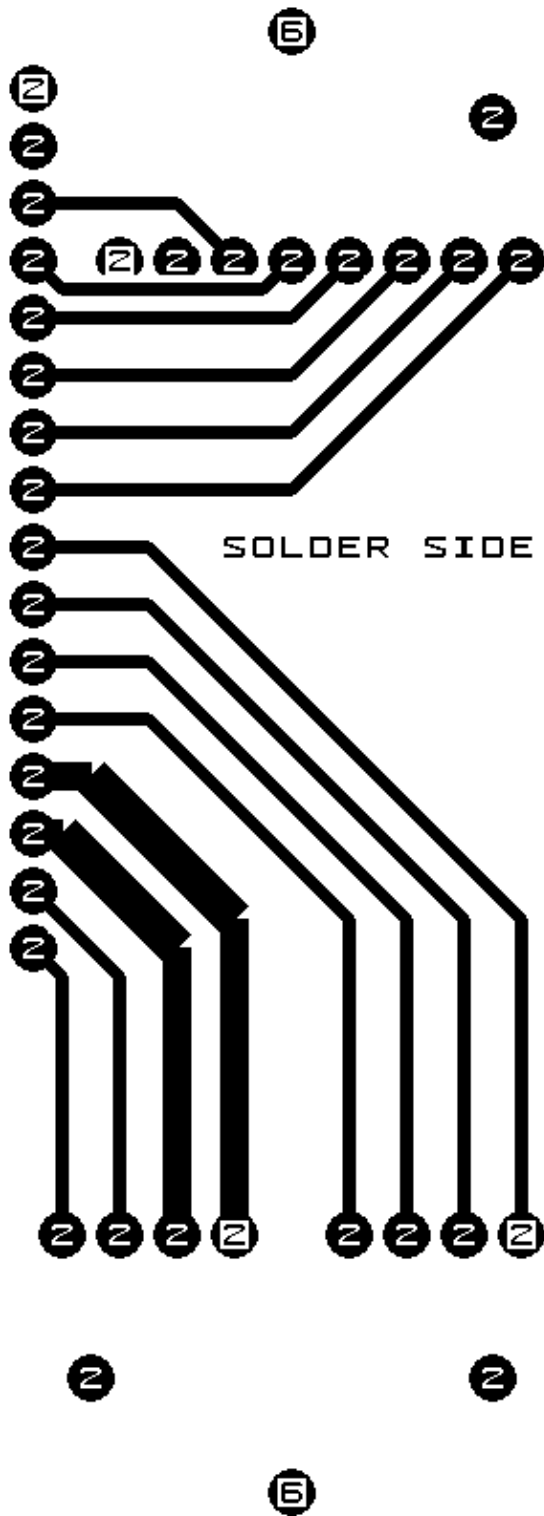
## A. Appendix A: Parts List

```
# Parts list for LCD32Holder Module (Rev. D)
#
N1: Header1x16.LCD32Holder - 1x16 Male Header [16/40 Jameco: 160881]
N2: Header1x8.LCD32Holder - 1x8 Male Header [8/40 Jameco: 160881]
N3: Header1x4.LCD32Holder - 1x4 Male Header [4/40 Jameco: 160881]
N4: Header1x4.LCD32Holder - 1x4 Male Header [4/40 Jameco: 160881]
X1: LCM_S01602DTRM - Lumex LCM-S01602DTR/M 2x16 LCD Display [Digikey: 67-1781-ND]
```

## B. Appendix B: Artwork Layer



### C. Appendix C: Back (Solder Side) Layer



## D. Appendix D: Front (Component Side) Layer

